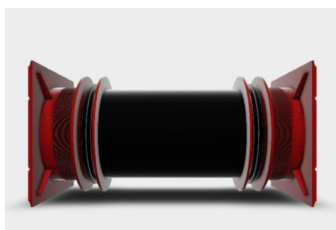
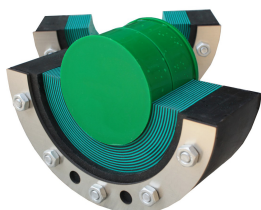
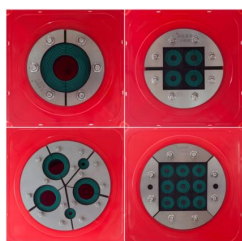




Systematic sealing The CCL 110 system



» Description

The CCL 110 system is a tried and tested cable entry with an inside diameter of 110 mm. With minimal installation effort, the CCL 110 wall insert seals safely against pressurised water. The system offers numerous connection options and is compatible with other entry systems.

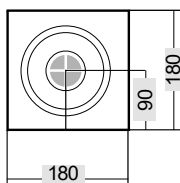
» Features

- Immediately gas and water pressure-tight
- Perfect, reliable sealing
- For smooth pipes and ducts
- Easy and quick installation, no additional connecting components necessary
- Economical solution
- Gas-tight and watertight up to 2.5 bar

» Dimensions

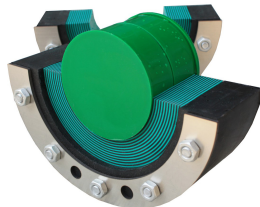
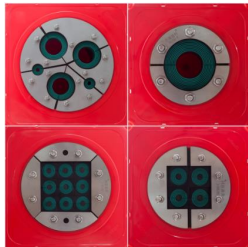
Part No.	Duct OD	Suitable for wall thickness
CCL110-K2/(L)	110mm	250-1000mm

(L) = Wall thickness in mm





Systematic sealing The CCL 150 system



» Description

The CCL 150 system is a tried and tested cable entry with an inside diameter of 150 mm. With minimal installation effort, the CCL 150 wall insert seals safely against pressurised water. The system offers numerous connection options and is compatible with other entry systems.

» Features

- Immediately gas and water pressure-tight
- Perfect, reliable sealing
- For smooth pipes and ducts
- Easy and quick installation, no additional connecting components necessary
- Economical solution
- Gas-tight and watertight up to 2.5 bar

» Dimensions

Part No.	Duct OD	Suitable for wall thickness
CCL150-K2/(L)	160mm	250-1000mm

(L) = Wall thickness in mm

